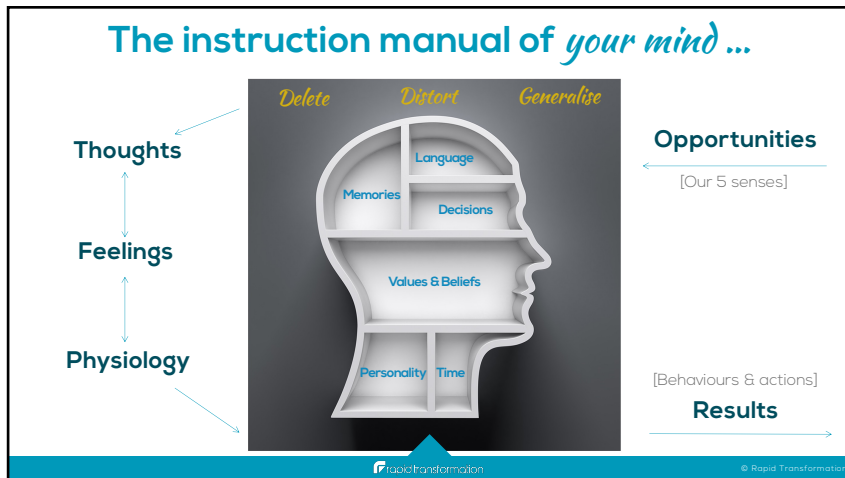




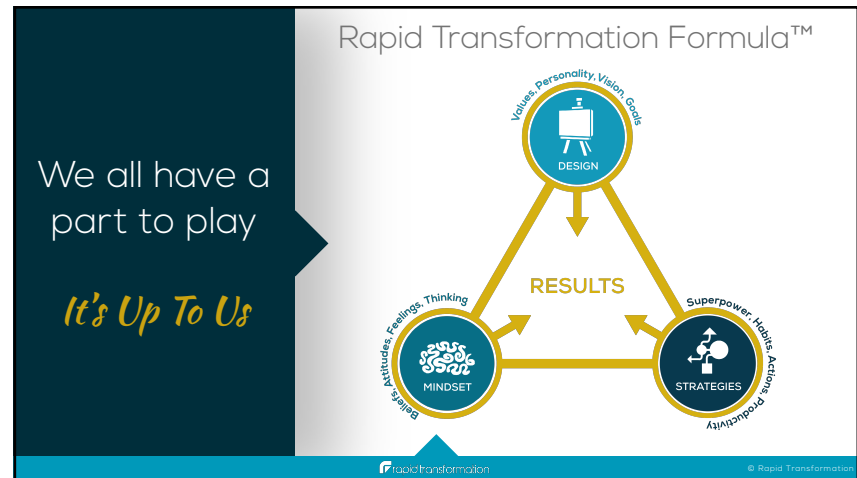
1



2



3



4

Values - Personality - Vision - Goals

DESIGN

Business goals = Your goals

6  
7  
8  
9  
9  
8  
7

rapidtransformation © Rapid Transformation

5

The map is useless without knowing .....

1. Where are you NOW?
2. Where do you want to go?
3. What 'transport' method(s) are available?

rapidtransformation © Rapid Transformation

6

Too big?

Big enough?

rapidtransformation © Rapid Transformation

7

Stretched but not strained!

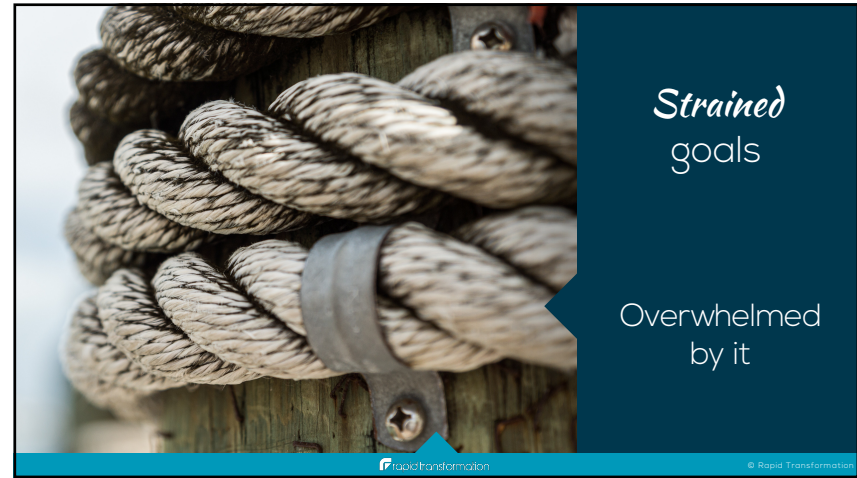
rapidtransformation © Rapid Transformation

8





9



10



11



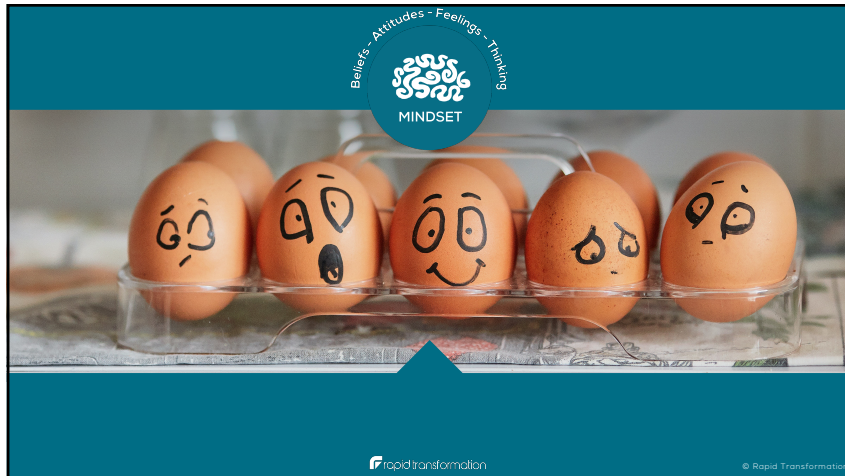
12



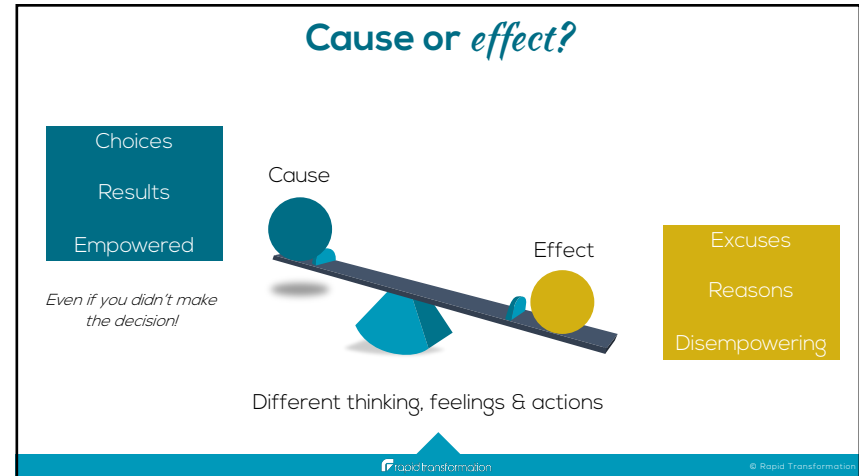
13



14



15



16

Your Beliefs  
(i.e. your stories)

They influence what you  
do & don't do!

© Rapid Transformation

17

It's an *inside job!*

Thoughts

Feelings

Physiology

Opportunities  
[Our 5 senses]

Results  
[Behaviours & actions]

Delete Distort Generalise

Language

Memories Decisions

Values & Beliefs

Personality Time

© Rapid Transformation

18

*Good* news!

You will have positive beliefs  
that will be supporting you  
towards your goals!

© Rapid Transformation

19

Uncovering your *limiting beliefs!*

Behaviours & actions

Beliefs

Stories  
'Facts'  
Excuses  
Reasons

It's often not the challenges/changes themselves that get us 'down', it's the beliefs we assign to them or the perception of the consequences that make the biggest impact!

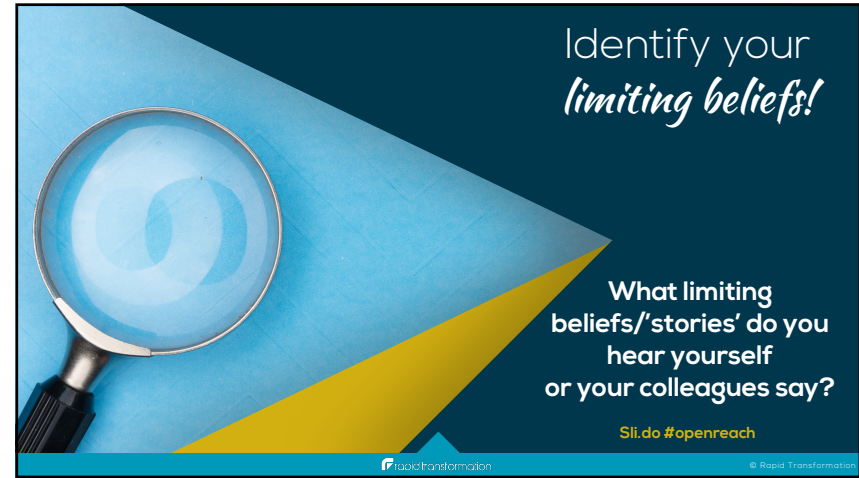
© Rapid Transformation

20





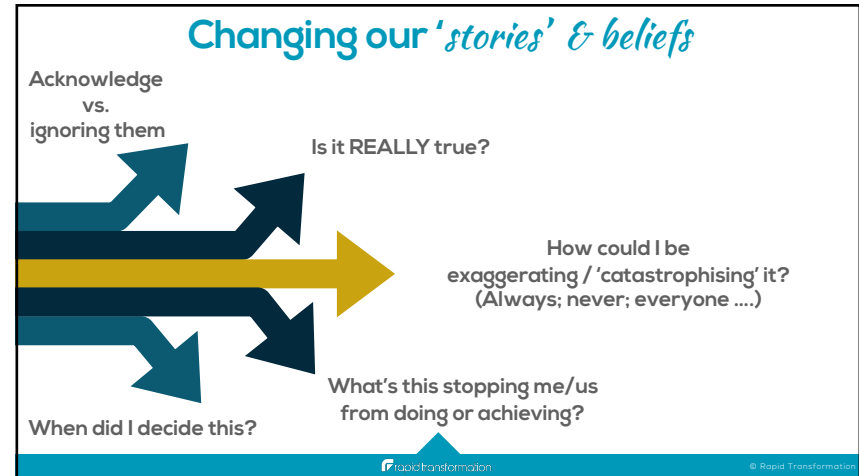
21



22



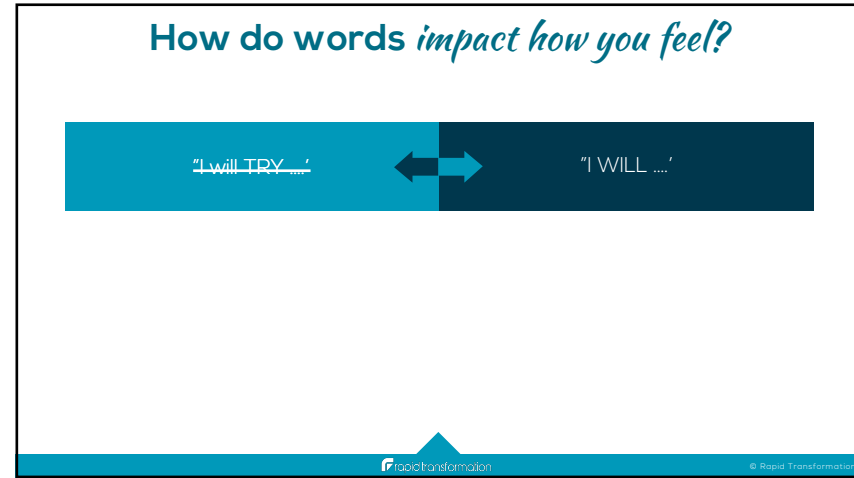
23



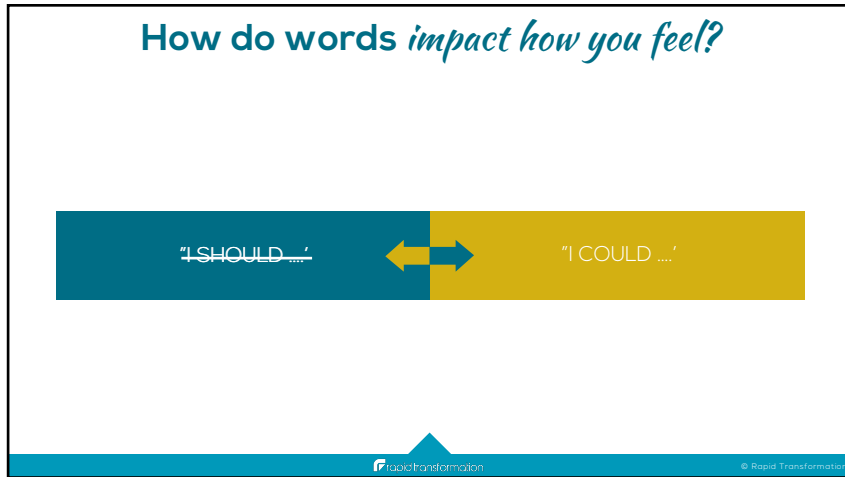
24



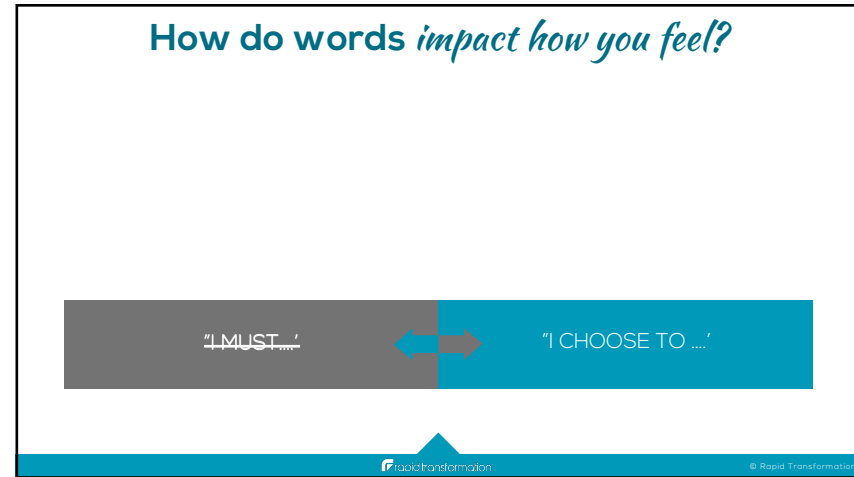
25



26



27



28



29



30